

Year 4 Welcome to Summer 1!

This term our main Exploration is ‘The Great Outdoors’. You will be learning all about the Human and Physical Geography of England, Romans in Britain, Animals including humans in Science, decimals and money in Maths and in English, we will be writing a narrative, information texts and playscripts. Therefore, at home we would like for you to consolidate your learning through the home learning tasks below.

All pupils must complete the tasks by Thursday 26th May 2022

All pupils are expected to do the following weekly set task alongside:

- ✓ **Daily reading—The expectation is that your child will read daily for a minimum of 20 minutes at home using Rising stars, and complete the quiz when the book is completed**
- ✓ **Weekly maths – Assigned on Mymaths/Numbots/Times Tables Rock Stars**
- ✓ **Weekly Spellings – See below**

Education must develop every child’s personality, talents, and abilities to the full (RRS Article 28 & 29).

We can’t wait to see what you do and look forward to seeing your wonderful home learning.

Yours Sincerely,

Year 4 Team

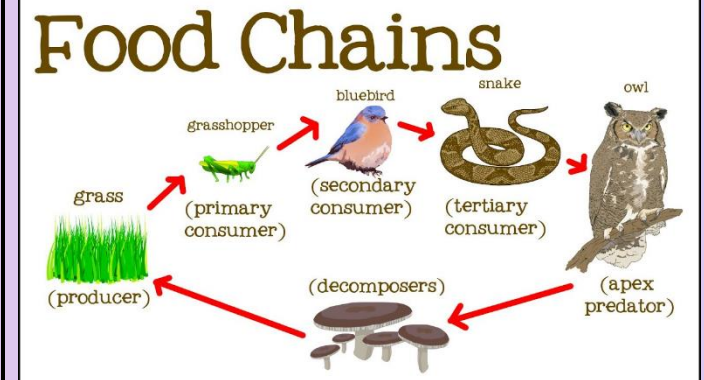
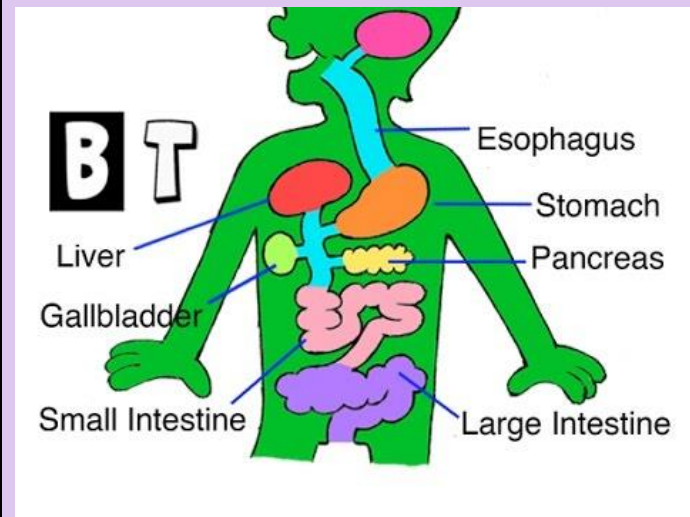
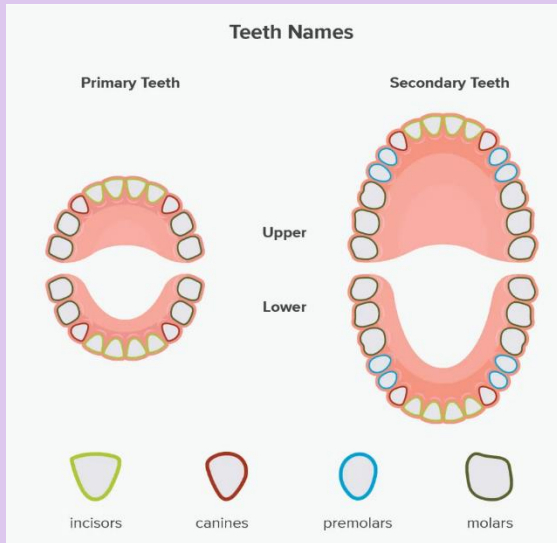
Exploration of Animals including Humans

Facts children need to know and learn.

Animals including Humans

- The enamel that covers the outer part of the tooth is the hardest substance in the human body!
- There is nobody else in the whole world who has the same shape teeth as you- your smile is unique
- There are 3 main types of teeth: incisors, molars and canines
- Humans have two sets of teeth throughout their lifetime
- Adults have 32 teeth
- Your brain is sometimes more active when you're asleep than when you're awake
- Your mouth produces about one litre of saliva each day!
- Human teeth are just as strong as shark teeth.
- Oesophagus Pipe. Your oesophagus is about 25 centimetres long and it's a stretchy pipe
- Your stomach is filled with powerful acids that breaks down the food you eat
- It takes around 24 hours for your dinner to wind its way through the nine-metre-long digestive tract

Pictures and information



Belmont School Home Learning Year 4 Summer 1

ANIMAL LIFE CYCLES FOR CHILDREN

Classifying Animals

41 Fish <ul style="list-style-type: none"> - Live in water. - Breathe with gills. 	42 Amphibians <ul style="list-style-type: none"> - Live on land and in water. - Have moist skin. - Lay eggs in water. 	45 Mammals <ul style="list-style-type: none"> - Have body hair or fur. - Give birth to live young. - Produce milk. 	46 Is it a Vertebrate? <ul style="list-style-type: none"> - Is a frog a vertebrate? <p style="font-size: small; text-align: center;">Yes! It has a backbone.</p>
43 Reptiles <ul style="list-style-type: none"> - Have dry, scaly skin. - Lay eggs with soft shells. 	44 Birds <ul style="list-style-type: none"> - Have feathers and wings. - Lay eggs with hard shells. 	47 Is it a Vertebrate? <ul style="list-style-type: none"> - Was a dinosaur a vertebrate? <p style="font-size: small; text-align: center;">Yes! It has a backbone.</p>	48 Is it a Vertebrate? <ul style="list-style-type: none"> - How about a worm? <p style="font-size: small; text-align: center;">No! A worm does not have a backbone.</p>

Animal Habitats

Please help us find our homes.

<p>The Forest Habitat</p>	<p>The Water Habitat</p>
<p>The Desert Habitat</p>	<p>The Underground Habitat</p>

Key Vocabulary and definitions			
Insert word	Definition	Insert word	
<p>diet</p>	The food and drink that a person or animal usually eats.	<p>incisor</p>	Front teeth used to cut up food.
<p>digestive system</p>	The parts of the body that work together to break down food and make energy for the body.	<p>molar</p>	A large tooth near the back of the mouth with a broad surface used for grinding.
<p>canine</p>	Pointy teeth next to the front teeth, two on top and two on bottom. They are sharp to tear food.	<p>habitat</p>	A place an animal lives.

Belmont School Home Learning Year 4 Summer 1

Home Learning Tasks

Week 1:

Choose an animal and use drawing skills to sketch it.



<https://www.youtube.com/watch?v=lijPcX2EuQA>

Week 2:

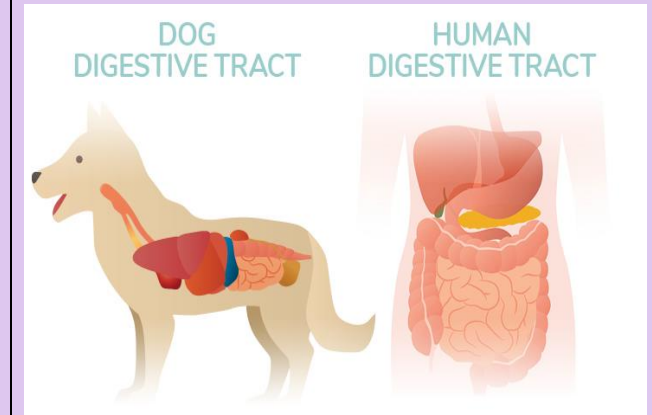
Research diet of the animal draw the teeth and explain how their teeth are linked to their diet.



[Why do animals have different teeth? - BBC Bitesize](https://www.youtube.com/watch?v=s06XzaKqELk)

Week 3:

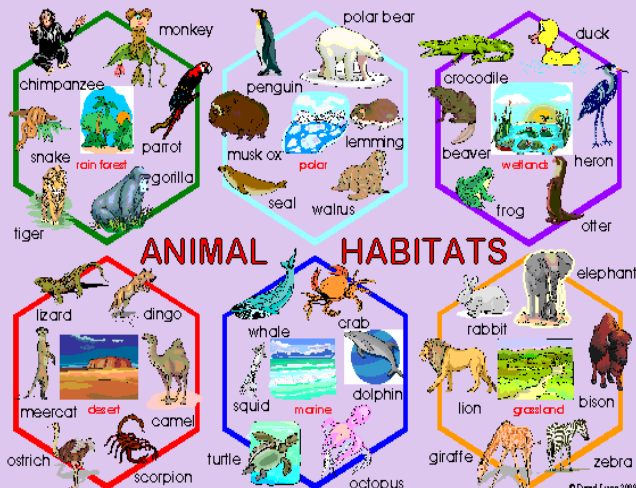
Research the animal's digestive system, note similarities and differences between the animal and a human.



<https://www.youtube.com/watch?v=s06XzaKqELk>

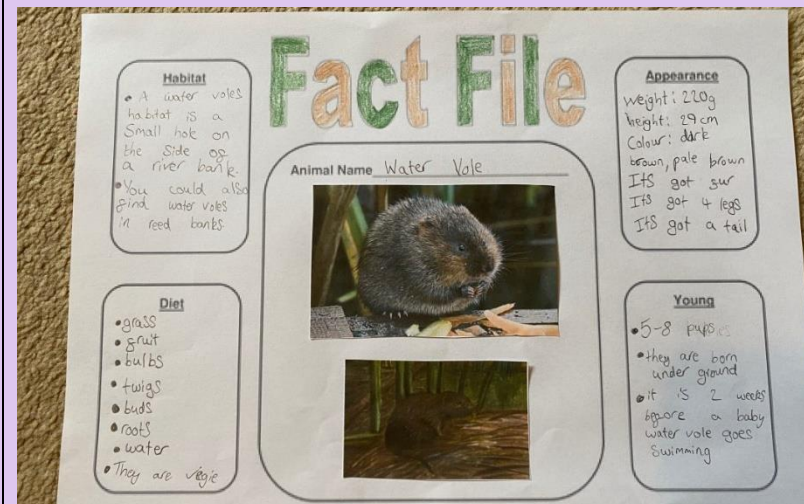
Week 4:

Research information on your chosen animal's habitat and make notes.



Week 5:

Create a fact file about the animal including the information you have researched on teeth, diet, habitat and digestive system.



Week 6:

Create a podcast or video about your chosen animal in a documentary style of David Attenborough.



Belmont School Home Learning Year 4 Summer 1

Spellings

Every week you will have a spelling test. Please learn the spellings.

	<u>Week 1</u>	<u>Week 2</u>	<u>Week 3</u>	<u>Week 4</u>	<u>Week 5</u>	<u>Week 6</u>
Group 1	<u>Suffixes (ly)</u> quickly happily suddenly carefully gently softly	<u>Suffix (ing)</u> walking skipping jumping stopping drawing grabbing	<u>Contractions</u> I'll isn't hasn't I'm he'll she'll	<u>Cuffix –ed</u> jumped laughed talked stopped scared cried	<u>Prefix –dis</u> disagree disappoint disobey disbelief dislike disability	<u>y making i sound</u> myth gym egypt pyramid mystery
Group 2	<u>/s/ spelt sc</u> science scene abscess ascend descend muscle scientist	<u>-sion</u> division invasion confusion decision television collision	<u>Apostrophes for contraction</u> would've could've should've haven't wasn't wouldn't	<u>Homophones</u> weather whether missed mist who's whose	<u>Homophones</u> fair fare meddle medal plain plane	<u>-ous</u> poisonous dangerous famous enormous jealous serious hideous
Group 3	empire civilisation invasion canine incisor molar decimal equivalent	intestine oesophagus pancreas stomach saliva	<u>-ough</u> tough cough rough enough bought thorough drought	<u>Homophones</u> guessed guest morning mourning who's whose allowed aloud	<u>Homophones</u> cereal serial father farther vein vain bare bear	<u>-able</u> adorable changeable noticeable dependable comfortable understandable enjoyable reliable